




GENTEX®

USSOCOM FAMILY OF TACTICAL HEADBORNE SYSTEMS (FTHS)

COMPLETE PRODUCT GUIDE

GROUND: H92403-19-D-0003 CLIN X002
COXSWAIN: H92403-19-D-0004 CLIN X003

 www.ops-core.com/fths

Program Overview	3
Platform Overview	4
Sizing Guide	12
Helmet Platforms	13
Mandibles	19
Low Profile Ballistic Applique	21
Optics	23
Respiratory	27
Helmet Covers	29
Communications Accessory Suite: Land	33
Other Accessories	35
Replacement Parts	41
Third Party Accessories	53
Supply Form	54
Customer Service	55



Family of Tactical Headborne Systems

Program Overview

The Ops-Core Family of Tactical Headborne Systems (FTHS) provides world class head, face, eye, and respiratory protection. Our portfolio of platforms, communications, and accessories is managed and procured through two USSOCOM contracts, FTHS Ground and FTHS Coxswain. We prioritize orders that come through these contracts. For assistance with procurement, complete the supply form on page 54, and contact the appropriate member of the PM-SOF Program Team below:

Headborne Systems

Nick Tsantinis

PM-SOF SSES

(O) 508-206-3746

NIPR: nicholas.tsantinis.civ@mail.mil

Communications

Michael Richards

PM-SOF SSES

(O) 508-308-6375

NIPR: michael.o.richards2.ctr@mail.mil

FTHS Ground: H92403-19-D-0003 CLIN X002

FTHS Coxswain: H92403-19-D-0004 CLIN X003



Helmet Platforms

The Ops-Core FTHS helmet platforms are the latest evolution of the FAST® helmet systems currently worn by USSOCOM. These helmet systems incorporate the latest innovations in materials and technology, resulting in lightweight helmet systems that are optimized to meet the mission of the USSOCOM operator. By continuing to leverage the FAST geometry, all components on the FTHS Helmet systems are legacy compatible with currently fielded FAST helmets.



Ground Ballistic Helmet

The FTHS Ground Ballistic is a modular, scalable, helmet platform that provides protection from 9mm, frag, and blunt impact. This helmet is equipped with new features including Skeleton Ops-Core ARC™ Rails, Modular Bungee Shroud, and Vented Lux Liner.



Ground Non-Ballistic Helmet

The FTHS Ground Non-Ballistic is a modular, scalable, helmet platform that provides blunt impact protection. This helmet is equipped with new features including Skeleton Ops-Core ARC Rails, Modular Bungee Shroud, and Vented Lux Liner.



Coxswain Helmet

The FTHS Coxswain Helmet is a modular, scalable, helmet platform that provides blunt impact protection and can also provide 9mm and frag protection when worn in conjunction with the LPBA. This helmet is equipped with new features including Skeleton Ops-Core ARC Rails, Ops-Core ARC Shims, Modular Bungee Shroud, and Vented Lux Liner.

FAST Helmet Shell Architecture

The FTHS helmet systems use the same FAST base geometry that is the foundation of legacy SOCOM helmet systems such as the FAST Maritime and FAST LBH. Process and material innovations have led to a shell that offers improved protection in a lighter, thinner helmet shell.



Optimized Edgetrim: Allows more room for communications headsets

Carbon-Fiber Edgeband: Increases the overall strength and rigidity of the helmet shell

Thinner: 0.84mm thinner than currently fielded FAST Maritime helmet (Previously the thinnest FAST Helmet)

Lighter: 12% lighter than currently fielded FAST Maritime Helmet (Previously the lightest FAST Helmet)

Improved Frag Performance:

	2 gr	4 gr	16 gr	64 gr	17 gr	9mm
FTHS	4200 f/s	3475 f/s	2475 f/s	1750 f/s	2297 f/s	1195 f/s
Maritime	4200 f/s	3475 f/s	2475 f/s	1750 f/s	n/a	1195 f/s
LBH	4200 f/s	3475 f/s	2475 f/s	1750 f/s	2297 f/s	1400 f/s

FTHS Helmet Platform Overview

FAST Vented Lux Liner

The FAST Vented Lux Liner provides 360° of impact protection. It comes equipped with front and rear comfort pads designed to provide optimal comfort over extended periods of time. All other comfort pads are configurable and come in ¼", ½", and ¾" thicknesses to allow the operator to customize the fit of their system.



360° of Impact Protection: One piece EPP impact liner provides multi-hit impact protection across the entire helmet surface

Headband Channel: Integrated headband channel allows comms with headbands to be worn without creating hot spots

Increased Support: Front and rear pads combined provide additional support for use with a fully-kitted helmet over an extended period of time

Custom Fit: Three thickness comfort pads options to allow the operator to customize their fit

Legacy Compatible: Legacy compatible with currently fielded FAST helmets

Low Profile Occ-Dial with Head-Loc Retention System

The Low Profile Occ-Dial with Head-Loc® Retention System significantly increases the stability of the helmet system. The Occ-Dial has an internal clutch mechanism to ensure that it retains its tension under high stress. The Head-Loc adjustment sliders can be quickly adjusted with one hand to change the length of the chinstrap.



Universal Nape Pad Integration

One Size Fits All Fitband: The universal fitband and Occ-Dial are one-size-fits-all components

Reduced Snag: The smaller profile of the Low Profile Occ-Dial reduces snag hazards

Easy Operation: Head-Loc sliders and Low Profile Occ-Dial can be easily operated with a single hand

Scalable Stability: The Universal Nape Pad can be added to further increase the stability of the system

Legacy Compatible: Legacy compatible with currently fielded FAST helmets equipped with Vented Lux Liners

Modular Bungee Shroud

The Modular Bungee Shroud (MBS) features an integrated bungee retention that prevents interference with other accessories and a low-profile design that resists snags. It features a machined removable insert, designed to be changed out without removing the shroud from the helmet, to provide multiple mounting solutions within the same shroud platform.



Lightweight: Lightest NVG Shroud / Bungee retention option available

Snag-Free: Snag-free Integrated NVG Retention w/ carabiner clips (no need for additional tie downs or lanyard)

Modular Platform: Removable Anodized Aluminum insert designed to be changed without removing the shroud from the helmet and be swapped with other mount solutions (Refer to page 42)

Legacy Compatible: Legacy compatible with currently fielded FAST helmets

FTHS Helmet Platform Overview

FAST Skeleton Ops-Core ARC Rail

The FAST Skeleton Ops-Core ARC Rail offers a significant weight savings over legacy LBH and Maritime ARC rails. In addition to the standard top and rear dovetail tracks and O2 clip locations, the rails feature zip tie locations for cable management, a rear retention strap attachment location, and compatibility with ARC Shims.



Light Weight: Lightest weight Ops-Core ARC Rail currently available

Cable Management: Zip tie locations along the top and bottom edges for cable management

Rear Retentions Strap: Integrated slot for use with Rear Retention Strap, which is provided with the LPBA

Legacy Functionality: Maintains key ARC Rail attachment features such as top and rear dovetail tracks and O2 clip location

ARC Shim Compatibility: Increased functionality and attachment points when used with the FAST Skeleton ARC Shim

Legacy Compatible: Legacy compatible with currently fielded FAST LBH and Maritime helmets

FAST Skeleton Ops-Core ARC Shim

FAST Skeleton Ops-Core ARC Shims come standard on the FAST FTHS Coxswain helmet, but can be added to any FTHS helmet. This is located between the rail and helmet shell to provide attachment locations for FAST Mandibles and LPBA without occupying any space in the top or rear dovetail tracks.



Easy Integration: Securely attach mandibles and appliques without the need to remove other accessories from your ARC Rails

Mandible Attachment: Mandibles arms attach below lower edge of rail and clip into the ARC Shim

LPBA Attachment: LPBA connects into the top edge of the rail and clips into the ARC Shim

Legacy Compatible: Legacy compatible with currently fielded FAST LBH and Maritime helmets

FTHS Helmet Platform Overview

FTHS Universal Loop Pattern

The FTHS Universal Loop pattern is a one-size-fits-all exterior Velcro® loop pattern that provides the necessary surface area for attaching key components such as strobes, cameras, and batteries, while breaking up NIR signature by using irregular shapes.



Reduced Surface Area: Reduced surface area and irregular shapes break up NIR signature without compromising functionality

Legacy Compatible: Legacy compatible with currently fielded FAST LBH and Maritime helmets

Sizing Guide

Achieving the Optimal Fit

The FAST FTHS Helmet Systems are designed to fit the largest group of users in helmet sizes that most closely match their head. Follow the sizing guide below to determine your helmet size. Be sure to pull the measuring tape tight against your head while measuring. Once a measurement is taken, refer to the corresponding chart to determine the correct size. If your measurement falls between two sizes, choose the size that feels most comfortable. If unsure, choose the larger of the two.

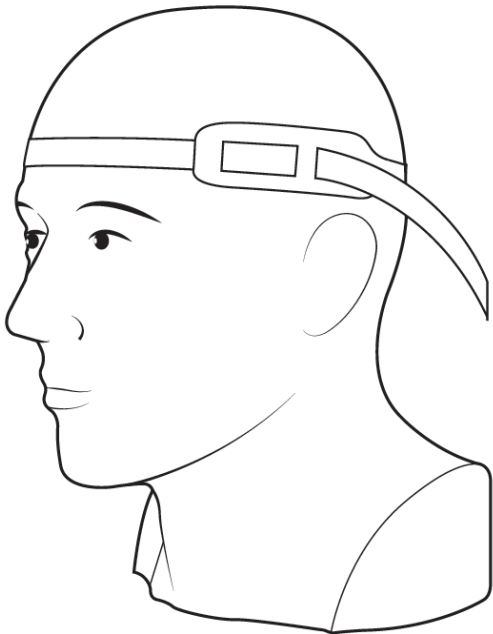
For additional guidance on how to achieve the optimal fit, check out our fit video at: <https://youtu.be/VVhyW12aYFA>

HELMET SIZING GUIDE:

Measure your head circumference by wrapping the measuring tape slightly above the bony eyebrow ridges of the forehead and above both ears.

FAST HELMET SIZE	M	L	XL	XXL
Head Circumference (cm)	53 - 56	56 - 59	59 - 62	62 - 64.5
Head Circumference (in)	20 ⁷ / ₈ - 22	22 - 23 ¹ / ₄	23 ¹ / ₄ - 24 ³ / ₈	24 ³ / ₈ - 25 ³ / ₈
Head Size (US)	up to 7	up to 7 ³ / ₈	up to 7 ⁵ / ₈	up to 8 ¹ / ₈

Ops-Core Fit Kit: H10856-1



Helmet Platforms

FAST FTHS Ground Ballistic Helmet

Available on FTHS Ground Contract



Lightweight Ballistic Helmet System

The FTHS Ground Ballistic is a modular, scalable, helmet platform that provides protection from 9mm, frag, and blunt impact. This helmet is equipped with new features including Skeleton Ops-Core ARC Rails, Modular Bungee Shroud, and Vented Lux Liner.

Sizes

M, L, XL, XXL

Colors

Tan 499, MultiCam, Neutral Gray

Part Numbers

Refer to Page 17

Helmet Platforms

FAST FTHS Ground Non-Ballistic Helmet

Available on FTHS Ground Contract



Lightweight Non-Ballistic Helmet System

The FTHS Ground Non-Ballistic is a modular, scalable, helmet platform that provides blunt impact protection. This helmet is equipped with new features including Skeleton Ops-Core ARC Rails, Modular Bungee Shroud, and Vented Lux Liner.

Sizes

M, L, XL, XXL

Colors

Tan 499, MultiCam, Neutral Gray

Part Numbers

Refer to Page 17

FAST FTHS Coxswain Helmet

Available on FTHS Coxswain Contract



Scalable Non-Ballistic Helmet System

The FTHS Coxswain Helmet is a modular, scalable, helmet platform that provides blunt impact protection and can also provide 9mm and frag protection when worn in conjunction with the LPBA. This helmet is equipped with new features including Skeleton Ops-Core ARC Rails, Ops-Core ARC Shims, Modular Bungee Shroud, and Vented Lux Liner.

Sizes

M, L, XL, XXL

Colors

Tan 499, MultiCam, Neutral Gray

Part Numbers

Refer to Page 17

FAST FTHS Coxswain Helmet System

Available on FTHS Coxswain Contract



Non-Ballistic Helmet System with Scalable Protective Accessories

The FTHS Coxswain Helmet System includes the FAST FTHS Coxswain Helmet, the Step-In Day and Night Visors, FAST Low Profile Ballistic Applique, FAST Ballistic Mandible, and FAST Carbon Composite Mandible.

Sizes

M, L, XL, XXL

Colors

Tan 499, MultiCam, Neutral Gray

Part Numbers

Refer to Page 17

FAST FTHS Helmet Part Numbers

Ground Ballistic Helmet

Size	Color	Part Number
Medium	Tan 499	A14556-01G01A01
Medium	MultiCam	A14556-01F01A01
Medium	Neutral Gray	A14556-01H09B02
Large	Tan 499	A14556-02G02A01
Large	MultiCam	A14556-02F02A01
Large	Neutral Gray	A14556-02H10B02
X-Large	Tan 499	A14556-03G03A01
X-Large	MultiCam	A14556-03F03A01
X-Large	Neutral Gray	A14556-03H11B02
XX-Large	Tan 499	A14556-04G04A01
XX-Large	MultiCam	A14556-04F04A01
XX-Large	Neutral Gray	A14556-04H12B02
Configured for use with Wilcox GSGM		
Medium	Tan 499	A14556-01G01A01
Medium	MultiCam	A14556-01F01A01
Large	Tan 499	A14556-01H09B02
Large	MultiCam	A14556-02G02A01
X-Large	Tan 499	A14556-02F02A01
X-Large	MultiCam	A14556-02H10B02
XX-Large	Tan 499	A14556-03G03A01
XX-Large	MultiCam	A14556-03F03A01

Ground Non-Ballistic Helmet

Size	Color	Part Number
Medium	Tan 499	A14557-09G01A01
Medium	MultiCam	A14557-09F01A01
Medium	Neutral Gray	A14557-09H09B02
Large	Tan 499	A14557-10G02A01
Large	MultiCam	A14557-10F02A01
Large	Neutral Gray	A14557-10H10B02
X-Large	Tan 499	A14557-03G03A01
X-Large	MultiCam	A14557-03F03A01
X-Large	Neutral Gray	A14557-03H11B02
XX-Large	Tan 499	A14557-12G04A01
XX-Large	MultiCam	A14557-12F04A01
XX-Large	Neutral Gray	A14557-12H12B02
Configured for use with Wilcox GSGM		
Medium	Tan 499	A14557-09G01E01
Medium	MultiCam	A14557-09F01E01
Large	Tan 499	A14557-10G02E01
Large	MultiCam	A14557-10F02E01
X-Large	Tan 499	A14557-03G03E01
X-Large	MultiCam	A14557-03F03E01
XX-Large	Tan 499	A14557-12G04E01
XX-Large	MultiCam	A14557-12F03E01

Coxswain Helmet

Size	Color	Part Number
Medium	Tan 499	A14696-09G01A01
Medium	MultiCam	A14696-09F01A01
Medium	Neutral Gray	A14696-09H09B02
Large	Tan 499	A14696-10G02A01
Large	MultiCam	A14696-10F02A01
Large	Neutral Gray	A14696-10H10B02
X-Large	Tan 499	A14696-03G03A01
X-Large	MultiCam	A14696-03F03A01
X-Large	Neutral Gray	A14696-03H11B02
XX-Large	Tan 499	A14696-12G04A01
XX-Large	MultiCam	A14696-12F04A01
XX-Large	Neutral Gray	A14696-12H12B02
Coxswain Helmet System (Includes Accessories)		
Medium	Tan 499	A14793-01G01G01
Medium	MultiCam	A14793-49F17F01
Medium	Neutral Gray	A14793-13H05H03
Large	Tan 499	A14793-02G02G01
Large	MultiCam	A14793-50F18F01
Large	Neutral Gray	A14793-14H06H03
X-Large	Tan 499	A14793-03G03G01
X-Large	MultiCam	A14793-51F19F01
X-Large	Neutral Gray	A14793-15H07H03
XX-Large	Tan 499	A14793-04G04G01
XX-Large	MultiCam	A14793-52F20F01
XX-Large	Neutral Gray	A14793-16H08H03

Helmet Platforms

Skull Mount System

Available on FTHS Ground Contract



One Size Fits All Accessory Mounting Platform

The Skull Mount System is a lightweight, one-size-fits-all solution for mounting accessories intended for use where ballistic and blunt impact protection are not necessary. Mounting locations include a Modular Bungee Shroud for mounting NVGs, ARC Rails, and a rear Velcro® patch.

Size
One Size
Color
Black
Part Number
H10102-1B3

Mandibles

FAST Ballistic Mandible

Available on FTHS Ground and FTHS Coxswain Contract



Conformable Ballistic Maxillofacial Protection

The FAST Ballistic Mandible is a lightweight, one-size-fits-all accessory designed for use with any FAST helmet equipped with Skeleton Ops-Core ARC Rails and Ops-Core ARC Shims. This one-size-fits-all mandible provides protection from 9mm, frag, and blunt impact without occupying any space in the rail. Flexible armor allows for uncompromised weapon sighting.

Size

One Size

Colors

Tan 499, MultiCam, Neutral Gray

Part Numbers

Tan 499	A14786-G
MultiCam	A14786-F
Neutral Gray	A14786-H

LEGACY COMPATIBILITY: FAST LBH & FAST Maritime

*Requires use of ARC Shim for attachment

Mandibles

FAST Carbon Composite Mandible

Available on FTTHS Ground and FTTHS Coxswain Contract



Lightweight, Vented Maxillofacial Protection

The FAST Carbon Composite Mandible is a lightweight, one-size-fits-all accessory designed for use with any FAST helmet equipped with Skeleton Ops-Core ARC Rails and Ops-Core ARC Shims. This one-size-fits-all mandible provides blunt impact protection without occupying any space in the rail. A pivoting vent plate on the front of the mandible prevents debris from entering while still allowing airflow.

Size

One Size

Colors

Tan 499, MultiCam, Neutral Gray

Part Numbers

Tan 499	A14785-G
MultiCam	A14785-F
Neutral Gray	A14785-H

LEGACY COMPATIBILITY: FAST LBH & FAST Maritime

*Requires use of ARC Shim for attachment

Ballistic Appliques

FAST Low Profile Ballistic Applique (LPBA)

Available on FTHS Ground and FTHS Coxswain Contract



Scalable Protection For Non-Ballistic Helmets

The FAST Low Profile Ballistic Applique (LPBA) is designed for use with FAST FTHS Non-Ballistic and Coxswain helmets equipped with Ops-Core ARC Shims. This two-piece applique provides lightweight, scalable helmet protection against 9mm and frag threats. Quick, repeatable, and tool-less attachment using VELCRO® Brand fastener and the Ops-Core ARC Shim.

Sizes

M, L, XL, XXL

Colors

Tan 499, MultiCam, Neutral Gray

Part Numbers

Refer to Page 22

*Requires use of ARC Shim for attachment

FAST Low Profile Ballistic Applique Part Numbers

Size	Color	Part Number
Medium	Tan 499	A14787-1G
Medium	MultiCam	A14787-1F
Medium	Neutral Gray	A14787-1H
Large	Tan 499	A14787-2G
Large	MultiCam	A14787-2F
Large	Neutral Gray	A14787-2H
X-Large	Tan 499	A14787-3G
X-Large	MultiCam	A14787-3F
X-Large	Neutral Gray	A14787-3H
XX-Large	Tan 499	A14787-4G
XX-Large	MultiCam	A14787-4F
XX-Large	Neutral Gray	A14787-4H

Rear Retention Strap Available as Accessory (Included w/ LPBA)

Color	Part Number
Tan 499	H10916-G
Black	H10916-C

Step-In Visor

Available on FTHS Ground and FTHS Coxswain Contract

LEGACY COMPATIBILITY: FAST LBH & FAST Maritime



Helmet Mounted Scalable Visor

The Ops-Core Step-In Visor is the ideal solution for users requiring full eye protection in addition to NVG accessibility. Featuring removable gaskets and tool-less interchangeable lenses, the Step-In Visor assembly is easily configured for various mission requirements. The Step-In Visor is a low profile, one-size-fits-all system that is fully compatible with Ops-Core helmets.

Size

One Size

Colors

Tan 499, Urban Gray

Part Numbers

Tan 499 w/ Clear Lens	H10915-2J
Urban Gray w/ Clear Lens	H10915-2E
Tan 499 w/ Tinted Lens	H10915-3J
Urban Gray w/ Tinted Lens	H10915-3E

LEGACY COMPATIBILITY: FAST LBH & FAST Maritime

Step-In Visor Lens Kits

Available on FTHS Ground and FTHS Coxswain Contract



Toolless Change Replacement Lenses

Step-In Visor replacement lenses quickly attach to the frame of the visor without the use of tools. Each replacement lens comes equipped with a forehead an foam gasket, rubber nose bridge, and microfiber cleaning cloth. These lenses meet MIL-PRF-32432 and ANSI Z87.1 standards.

Size

One Size

Colors

Clear, Tinted, High Contrast

Part Numbers

Clear	H10762-1
Tinted	H10762-2
High Contrast	H10762-3

Step-In Visor Replacement Parts



Replacement Gasket Kit

The kit includes all required components to replace side wind gaskets and a rubber nose bridge on the Step-In Visor.

Size	
One Size	
Color	
Black	
Part Number	
Black	H10787-1

Available on FTHS Ground Contract



Complete Step-In Visor Replacement Kit

The kit includes all required components to replace side wind gaskets, rubber nose bridge, bungees, and pull tabs on the Step-In Visor. Also includes rail clips and a microfiber cleaning cloth.

Size	
One Size	
Color	
Black	
Part Number	
Black	H10688-C

Available on FTHS Ground Contract

NVG Snap Shields for PVS-31

Available on FTHS Ground and FTHS Coxswain Contract



**NVG Not Included*

NVG Integrated Eye Protection

NVG Snap Shields attach to PVS-31 Night Vision Goggles (NVGs) to help safeguard the eyes and face from fragments, water spray, and debris with minimal impact to peripheral vision. Alternative to standard NVG rubber eyecups, which obstruct peripheral vision and can lead to fogging of the NVG ocular lens. This product meets MIL-PRF-32432 and an abbreviated and modified ANSI Z87.1 standards.

Size

One Size

Color

Clear

Part Number

Clear

H10935-A

Special Operations Tactical Respirator (SOTR)

Available on FTHS Ground Contract



Half Mask Tactical Respirator

The half mask Special Operations Tactical Respirator (SOTR) is designed to provide P100 protection against a wide range of oil and non-oil-based particulate contaminants during training and in operational environments. The low profile design offers protection without interfering with an operator’s tactics, techniques, and procedures (TTP) and seamlessly interfaces with weapon systems for optimal effectiveness.

Size

One Size

Color

Black

Part Number

w/ Microphone	G055-1000-01
w/o Microphone	G055-1000-03

Respiratory Protection

SOTR Accessories

Available on FTHS Ground Contract



SOTR O2 Strap

The SOTR O2 Strap Harness allows the operator to quickly attach the SOTR to their helmet using the O2 clip receiver on the Ops-Core ARC Rail.

Size	
One Size	
Colors	
Black	
Part Number	
Black	G055-1024-03

Available on FTHS Ground Contract



SOTR Replacement Filters

SOTR Replacement filters quickly attach to existing SOTRs with a single hand.

Size	
One Size	
Colors	
Black	
Part Number	
Black	G055-1005-02

Available on FTHS Ground Contract

Helmet Covers

FAST SF Helmet Cover

Available on FTHS Ground and FTHS Coxswain Contract



Helmet Cover for Ballistic & Non-Ballistic Platforms

The FAST SF Helmet Cover is lightweight accessory designed for shell protection and signature management. This helmet cover is easy to apply and is compatible with FAST SF Ballistic, FAST SF Carbon Composite, and FAST MT Super High Cut helmets. Features paracord attachment points for natural foliage, camouflage material, or cable management.

Sizes

M, L, XL, XXL

Colors

Tan 499, MultiCam, Neutral Gray, Urban Gray, Foliage Green, White

Part Numbers

Refer to Page 30

LEGACY COMPATIBILITY: FAST Maritime

Helmet Covers

FAST SF Helmet Cover Part Numbers

Size	Color	Part Number
Medium	Tan 499	H10739-1J
Medium	MultiCam	H10650-1A
Medium	Neutral Gray	H10650-1D
Medium	Urban Gray	H10739-1E
Medium	Foliage Green	H10739-1B
Medium	White	H10739-1P
Large	Tan 499	H10739-2J
Large	MultiCam	H10650-2A
Large	Neutral Gray	H10650-2D
Large	Urban Gray	H10739-2E
Large	Foliage Green	H10739-2B
Large	White	H10739-2P
X-Large	Tan 499	H10739-3J
X-Large	MultiCam	H10650-3A
X-Large	Neutral Gray	H10650-3D
X-Large	Urban Gray	H10739-3E
X-Large	Foliage Green	H10739-3B
X-Large	White	H10739-3P
XX-Large	Tan 499	H10739-4J
XX-Large	MultiCam	H10650-4A
XX-Large	Neutral Gray	H10650-4D
XX-Large	Urban Gray	H10739-4E
XX-Large	Foliage Green	H10739-4B
XX-Large	White	H10739-4P

Helmet Covers

MATBOCK Skins for FAST FTHS Helmets and Accessories

Available on FTHS Ground Contract



Adhesive Backed MATBOCK Ghost Lite Skins

Matbock Skins are adhesive backed fabric stickers made from lightweight, high strength Ghost Light fabric. Skins can be quickly added to the helmet to dramatically change its appearance to meet the needs of the mission. Available for all FTHS Helmets, Low Profile Ballistic Appliques, and the FAST Carbon Composite Mandible.

Size

M, L, XL, XXL

Color

MultiCam

Part Numbers

Refer to Page 32

Helmet Covers

MATBOCK Skins Part Number

FAST Helmets

Size	Ballistic	Non-Ballistic / Coxswain
Medium	H10928-1F	H10929-1F
Large	H10928-2F	H10929-2F
X-Large	H10928-3F	H10929-3F
XX-Large	H10928-4F	H10929-4F

Low Profile Ballistic Appliques

Size	Part Number
Medium	H10930-1F
Large	H10930-2F
X-Large	H10930-3F
XX-Large	H10930-4F

FAST Carbon Composite Mandible

Size	Part Number
One Size	H10931-1F

AMP Headset / CASL Kit

Available on FTTHS Ground Contract



Modular Communication Headset

The USSOCOM CASL Kit features the AMP Communication Headset, Near Field Magnetic Induction Earplug Kit, and AMP Helmet Rail Mount Kit. The AMP Communication Headset integrates seamlessly with Ops-Core helmets and provides an NRR of 22dB. NFMI Earplugs provide an increased NRR of 34dB while maintaining clear communication for enhanced situational awareness.

Size

One Size

Colors

Tan 499, Urban Gray

Part Numbers

Tan 499	1000723-02-0000
Urban Gray	1000723-02-0003

Communications Accessory Suite: Land (CASL)

AMP Accessories



AMP Cables

AMP download and communications cables allow users to connect a wide variety of PTTs, radios, Parachutist Oxygen Mask (POM) and accessories.

Sizes

One Size

Colors

Tan 499, Black

Part Numbers

Cable	Color	Part Number
Fischer to U174 Download Cable	Tan 499	N254584-00
Fischer to U174 Download Cable	Black	N254584-01
U173 Straight to 90° Comms Cable	Black	GW2003-1

Available on FTTH Ground Contract



AMP Skins

AMP Skins are adhesive backed vinyl stickers that can be applied to the outer surfaces of the AMP Communications Headset and AMP Rail arms to quickly change their appearance.

Size

One Size

Colors

MultiCam, MultiCam Alpine, MultiCam Tropic

Part Numbers

MultiCam	1000660-02
MultiCam Alpine	1000660-06
MultiCam Tropic	1000660-05

Available on FTTH Ground Contract

Other Accessories:

Helmet Accessories



Head-Loc Chinstrap Extender

The Head-Loc Chinstrap Extender clips into Head-Loc retention systems to provide additional length for use with CBRN Masks.

Size	
One Size	
Colors	
Tan 499, Black	
Part Number	
Tan 499	19-99-101
Black	19-99-103

Available on FTHS Ground Contract



Fleece Chincup Cover

The Fleece Chincup Cover can be used over the existing Head-Loc retention system chin cup for when wearing under the chin.

Size	
One Size	
Color	
Black	
Part Number	
Black	19-99-203

Available on FTHS Ground Contract

Other Accessories:

Helmet Accessories



19mm Swivel Clips & Shoes

19mm Swivel Clips are used to quickly attach goggles to Ops-Core ARC Rails. These clips provide rotational freedom of motion for goggles with a 19mm width strap.

Size	
One Size	
Colors	
Black	
Part Number	
Black	20-95-203

Available on FTHS Ground Contract



36mm Swivel Clips & Shoes

36mm Swivel Clips are used to quickly attach goggles to Ops-Core ARC Rails. These clips provide rotational freedom of motion for goggles with a 36mm width strap.

Size	
One Size	
Color	
Black	
Part Number	
Black	20-95-103

Available on FTHS Ground Contract

Other Accessories:

Helmet Accessories



Wing-Loc Adapter

The Wing-Loc Adapter provides a universal mounting base for attaching items to the Ops-Core ARC rail that do not have a mating dovetail feature.

Size	
One Size	
Colors	
Black	
Part Number	
Black	20-90-103

Available on FTHS Ground Contract



Picatinny Adapter

The Picatinny Adapter enables accessories that are intended for use with a Picatinny rail to be used the Ops-Core ARC Rail.

Size	
One Size	
Color	
Black	
Part Number	
Black	20-70-103

Available on FTHS Ground Contract

Other Accessories:

Helmet Accessories



Contour HD Video Adapter

The Contour Video Adapter enables Contour Cameras to be quickly attached to the Ops-Core ARC Rail. Allows for rotation of the camera to the desired pitch with secure stabilization.

Size	
One Size	
Colors	
Black	
Part Number	
Black	20-94-103

Available on FTHS Ground Contract



Single Clamp Adapter

The Single Clamp Adapter enables Surefire® E1L Lights to be quickly attached to the Ops-Core ARC Rail. Allows for rotation of the light to the desired pitch with secure stabilization.

Size	
One Size	
Color	
Black	
Part Number	
Black	20-97-103

Available on FTHS Ground Contract

Other Accessories:

Helmet Accessories



O2 Double Strap Kit

The O2 Double Strap kit allows POM O2 masks to be attached to the Ops-Core ARC Rails by securely mounting to the top and rear dovetail tracks.

Size	
One Size	
Colors	
Tan 499	
Part Number	
Tan 499	26-99-101

Available on FTHS Ground Contract



O2 Single Strap Kit

The O2 Single Strap kit allows POM O2 masks to be attached to the Ops-Core ARC Rails by securely clipping into the Head-Loc clip receiver positioned at the elbow of the rail.

Size	
One Size	
Color	
Tan 499	
Part Number	
Tan 499	26-99-301

Available on FTHS Ground Contract

Other Accessories:

Helmet Accessories



Counterweight Kit for FAST Helmets

The Counterweight Kit for FAST helmets attaches to the rear of the helmet to provide additional weight to counterbalance NVGs. Comes with modular coated lead weights.

Size	
One Size	
Colors	
Tan 499	
Part Number	
Tan 499	39-99-101

Available on FTHS Ground Contract



Counterweight Kit for Skull Mount System

The Counterweight Kit for the Skull Mount System attaches to the rear of the helmet to provide additional weight to counterbalance NVGs. Comes with two weight options.

Size	
One Size	
Color	
Black	
Part Number	
Black	81-98-300

Available on FTHS Ground Contract

Replacement Parts:

Helmet Replacement Parts



Modular Bungee Shroud Kit

The Modular Bungee Shroud has a unique integrated bungee NVG retention and interchangeable insert plate to provide multiple mounting solutions within the same shroud platform.

Size

One Size

Colors

Tan 499, Black, Foliage Green

Part Number

Tan 499	H10672-G
Black	H10672-C
Foliage Green	H10672-B

Available on FTHS Ground Contract



MBS Universal Plate

The MBS Universal Plate is the universal style interchangeable insert that comes standard with the MBS. Optimized to fit Wilcox® G24 and Norotos™ mounts.

Size

One Size

Color

Tan 499, Black

Part Number

Tan 499	H10932-G
Black	H10932-C

Available on FTHS Ground Contract

Replacement Parts:

Helmet Replacement Parts

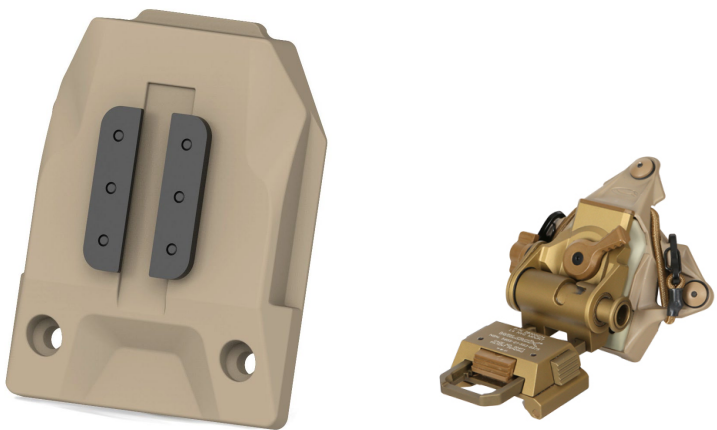


MBS Adapter Insert for Wilcox GSGM

This MBS Adapter enables the Wilcox GSGM to be used with the Modular Bungee Shroud without the additional stack up of a Wilcox L4 Interface Plate Adapter for GSGM Mount.

Size	
One Size	
Colors	
Tan 499, Black	
Part Number	
Tan 499	H10924-G
Black	H10924-C

Available on FTHS Ground Contract



MBS Adapter Insert for Wilcox G66/G69

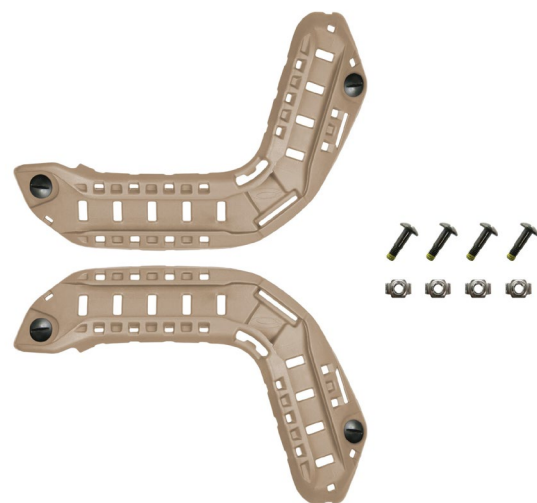
This MBS Adapter enables the Wilcox G66 and G69 to be used with the Modular Bungee Shroud to provide the users with the benefits of the MBS such as the integrated bungee NVG retention.

Size	
One Size	
Color	
Tan 499, Black	
Part Number	
Tan 499	H10925-G
Black	H10925-C

Available on FTHS Ground Contract

Replacement Parts:

Helmet Replacement Parts

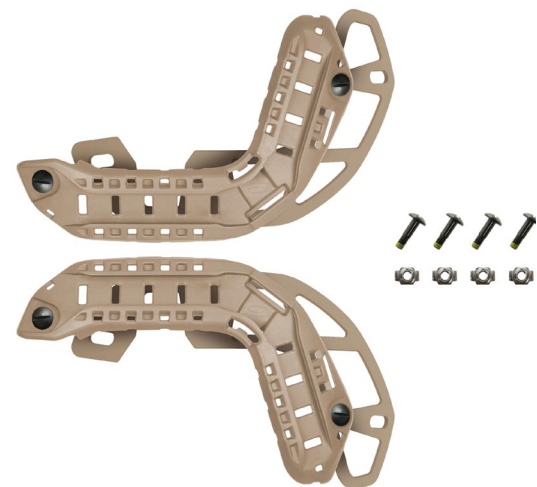


Skeleton Ops-Core ARC Rail Kit

The Skeleton Ops-Core ARC Rail Kit includes one left and one right Skeleton ARC Rail and attachment hardware.

Size
One Size
Colors
Tan 499, Foliage Green, Urban Gray
Part Number
Refer to Page 45

Available on FTHS Ground Contract



Skeleton Ops-Core ARC Rail and Shim Kit

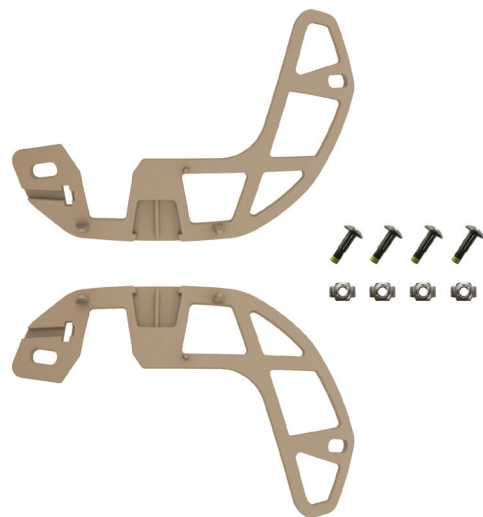
The Skeleton Ops-Core ARC Rail and Shim Kit includes one left and one right Skeleton Ops-Core ARC Rail, one left and one right Ops-Core ARC Shim, and attachment hardware.

Size
One Size
Color
Tan 499, Urban Gray
Part Number
Refer to Page 45

Available on FTHS Ground Contract

Replacement Parts:

Helmet Replacement Parts



Skeleton Ops-Core ARC Shim Kit

The Skeleton Ops-Core ARC Rail Kit features one left and one right Ops-Core ARC Shim and attachment hardware.

Size
One Size
Colors
Tan 499, Urban Gray
Part Number
Refer to Page 45

Available on FTTH Ground Contract



Rail Bungees

Rail Bungees provide an NVG retention solution when using a helmet not equipped with the Modular Bungee Shroud.

Size
M, L, XL, XXL
Color
Tan 499, Foliage Green, Black
Part Number
Refer to Page 45

Available on FTTH Ground Contract

FAST FTHS Helmet Part Numbers

Skeleton Ops-Core ARC Rail Kit

Color	Part Number
Tan 499	H10691-A
Foliage Green	H10691-B
Urban Gray	H0691-N

Ops-Core ARC Shim Kit

Color	Part Number
Tan 499	A14794-3G
Urban Gray	A14794-3N

Skeleton Ops-Core ARC Rail and Shim Kit

Color	Part Number
Tan 499	H10788-1A
Urban Gray	H10788-D

Rail Bungees

Size	Color	Part Number
Medium	Tan 499	29-98-121
Medium	Foliage Green	29-98-122
Medium	Black	29-98-123
Large	Tan 499	29-98-141
Large	Foliage Green	29-98-142
Large	Black	29-98-143
X-Large	Tan 499	29-98-151
X-Large	Foliage Green	29-98-152
X-Large	Black	29-98-153
XX-Large	Tan 499	29-98-181
XX-Large	Foliage Green	29-98-182
XX-Large	Black	29-98-183

Replacement Parts:

Helmet Replacement Parts



Vented Lux Liner with Low Profile Occ-Dial and Head-Loc Chinstrap

This Vented Lux Liner replacement kit and includes Impact Liner with Comfort Pads, Low Profile Occ-Dial, and Head-Loc Chinstrap

Size
M, L, XL, XXL
Colors
Tan 499, Black, Foliage Green
Part Number
Refer to Page 47

Available on FTHS Ground Contract



Vented Lux Liner (Low Profile Occ-Dial and HeadLoc Chinstrap NOT INCLUDED)

This Vented Lux Liner replacement kit and includes Impact Liner with Comfort Pads only.

Size
M, L, XL, XXL
Color
Black
Part Number
Refer to Page 47

Available on FTHS Ground Contract

Vented Lux Liner Replacement Parts

Vented Lux Liner with Low Profile Occ-Dial and Head-Loc Chinstrap

Right Eye Dominant			Left Eye Dominant		
Size	Color	Part Number	Size	Color	Part Number
Medium	Tan 499	A14799-01	Medium	Tan 499	A14799-17
Medium	Black	A14799-09	Medium	Black	A14799-25
Medium	Foliage Green	A14799-05	Medium	Foliage Green	A14799-21
Large	Tan 499	A14799-02	Large	Tan 499	A14799-18
Large	Black	A14799-10	Large	Black	A14799-26
Large	Foliage Green	A14799-06	Large	Foliage Green	A14799-22
X-Large	Tan 499	A14799-03	X-Large	Tan 499	A14799-19
X-Large	Black	A14799-07	X-Large	Black	A14799-27
X-Large	Foliage Green	A14799-11	X-Large	Foliage Green	A14799-23
XX-Large	Tan 499	A14799-04	XX-Large	Tan 499	A14799-20
XX-Large	Black	A14799-08	XX-Large	Black	A14799-28
XX-Large	Foliage Green	A14799-12	XX-Large	Foliage Green	A14799-24

Vented Lux Liner (Low Profile Occ-Dial and Head-Loc Chinstrap NOT INCLUDED)

Size	Part Number
Medium	A14701-1
Large	A14701-2
X-Large	A14701-3
XX-Large	A14701-4

FTHS helmet platforms come standard with right eye dominant chinstraps

Replacement Parts:

Helmet Replacement Parts



Low Profile Occ-Dial and Right Eye Dominant Head-Loc Chinstrap

The Right Eye Dominant Head-Loc Chinstrap has the buckle positioned on the left side to avoid weapon interference.

Size
M, L, XL, XXL
Colors
Tan 499, Black, Foliage Green
Part Number
Refer to Page 49

Available on FTHS Ground Contract



Low Profile Occ-Dial and Left Eye Dominant Head-Loc Chinstrap

The Left Eye Dominant Head-Loc Chinstrap has the buckle positioned on the right side to avoid weapon interference.

Size
M, L, XL, XXL
Color
Tan 499, Black, Foliage Green
Part Number
Refer to Page 49

Available on FTHS Ground Contract

Occ-Dial Fitband with Head-Loc Retention System Replacement Parts

Low Profile Occ-Dial and Head-Loc Chinstrap

Right Eye Dominant			Left Eye Dominant		
Size	Color	Part Number	Size	Color	Part Number
Medium	Tan 499	H10697-11A	Medium	Tan 499	H10697-21A
Medium	Foliage Green	H10697-11B	Medium	Foliage Green	H10697-21B
Medium	Black	H10697-11C	Medium	Black	H10697-21C
Large	Tan 499	H10697-12A	Large	Tan 499	H10697-22A
Large	Foliage Green	H10697-12B	Large	Foliage Green	H10697-22B
Large	Black	H10697-12C	Large	Black	H10697-22C
X-Large	Tan 499	H10697-13A	X-Large	Tan 499	H10697-23A
X-Large	Foliage Green	H10697-13B	X-Large	Foliage Green	H10697-23B
X-Large	Black	H10697-13C	X-Large	Black	H10697-23C
XX-Large	Tan 499	H10697-14A	XX-Large	Tan 499	H10697-24A
XX-Large	Foliage Green	H10697-14B	XX-Large	Foliage Green	H10697-24B
XX-Large	Black	H10697-14C	XX-Large	Black	H10697-24C

Replacement Parts:

Helmet Replacement Parts



Vented Lux Liner Comfort Pad Replacement Kit

The Vented Lux Liner Comfort Pad Replacement Kit includes a complete set of comfort pads, including front and rear pads, for the Vented Lux Liner

Size	
One Size	
Colors	
Black	
Part Number	
Black	H10671-1

Available on FTHS Ground Contract



Universal Nape Pad Kit

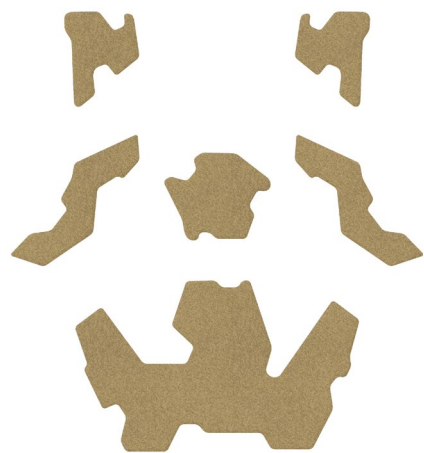
The Universal Nape Pad Kit includes a Universal Nape Pad to be used with any Occ-Dial or Worm-Dial fitband system.

Size	
One Size	
Color	
Black	
Part Number	
Black	H10693-C

Available on FTHS Ground Contract

Replacement Parts:

Helmet Replacement Parts



FTHS Universal Loop Pattern Kit

The FTHS Universal Loop Pattern Kit includes a complete set of exterior helmet Velcro® loop for a FTHS helmet.

Size

One Size

Colors

Tan 499, Foliage Green, Urban Gray

Part Number

Tan 499	H10661-1A
Urban Gray	H10661-1B
Foliage Green	H10661-1N

Available on FTHS Ground Contract



Helmet Hardware Kit

The Helmet Hardware Kits include four screws and four T-nuts to secure ARC Rails and chinstrap anchors.

Size

One Size

Color

Black

Part Number

Ballistic	H10692-1
Non-Ballistic	H10692-2
Non-Ballistic w/ Shims	H10692-3

Available on FTHS Ground Contract

Replacement Parts:

Mandible Replacement Parts



Ballistic Mandible Hardware Kit

The Ballistic Mandible Hardware kit includes replacement hardware for the FAST Ballistic Mandible.

Size	
One Size	
Colors	
Black	
Part Number	
Black	H10846-2

Available on FTHS Ground Contract



Bump Mandible Hardware Kit

The Bump Mandible Hardware kit includes replacement hardware for the FAST Carbon Composite Mandible.

Size	
One Size	
Color	
Black	
Part Number	
Black	H10846-1

Available on FTHS Ground Contract

Wilcox NVG Accessories

Item	Color	Part Number	Color	Part Number
Wilcox G24 VAS Mount	Tan 499	28300G24-T	Black	28300G24-B
Wilcox G22 VAS Mount	Tan 499	28300G22-T	Black	28300G22-B
Wilcox G24R VAS Mount	Tan 499	62101G03-T	Black	62101G03-B
Wilcox GSGM VAS Mount	Tan 499	62101G01-T	Black	62101G01-B
Wilcox DPAM VAS Mount	Tan 499	62101G02-T	Black	62101G02-B
Wilcox Lo-Pro Rail Shroud	Tan 499	62114G01-T	Black	62114G01-B
Wilcox Aeronox Mount	Tan 499	9M1000-1-T	Black	9M1000-1-B
Wilcox Aeronox Ground Helmet Adapter	Tan 499	9M1000-1-4-T	Black	9M1000-1-4-B
Wilcox Aeronox Battery Pack & Counterweights	Tan 499	9M1000-2-T	Black	9M1000-2-B
Wilcox L4 G32 Universal NVG Fixed Position VAS Mount	Tan 499	28301619-T	-	-
Wilcox L4 G66 VAS Mount	Tan 499	28300G66-T	-	-
Wilcox L4 G69 Lite VAS Mount	Tan 499	28300G69-T	-	-
Wilcox NVG Lanyard for L4 3-Hole Shroud	Tan 499	41400G08-T	-	-
Wilcox L4 Interface Plate Adapter for GSGM VAS Mount	Tan 499	62113G01-T	-	-

Product Procurement Supply Form

[illegible]

Our team of dedicated customer service and support professionals is highly trained on all aspects of our products. They are available to assist you with all needs, including checking the status of your order, billing, warranties and returns, orders, replacement parts, and technical support.

Ops-Core Customer Service

1.888.984.7155

1.617.670.3547

sales@gentexcorp.com

www.ops-core.com/fths

© 2020 Gentex Corporation. Gentex, Ops-Core, the OC plus Ops-Core logo, the OC logo, FAST, Occ-Dial, Head-Loc, and Step-In are registered trademarks of Gentex Corporation. Ops-Core ARC and AMP are trademarks of Gentex Corporation. Multicam is a registered trademark of LineWeight, LLC. VELCRO is a registered trademark of Velcro BVBA, used with permission. Matbock is a trademark of Matbock Origins, LLC. SureFire is a registered trademark of SureFire, LLC. Wilcox is a registered trademark of Wilcox Industries Corp. Norotos is a trademark of Norotos, Inc.

